



Gachon University is a model for the future, educating up and coming leaders in a multitude of fields. Founded as Gachon University in 2013 by merging two comprehensive universities located in Seongnam and Incheon, GU is the third biggest private university in Korea with a student enrollment number of 20,000. Just as you strive for success, so do we as the university aspire to not only become one of the top educational institutions in the nation, but also the world.

The **Gachon Short-Term Education Program (G-STEP)** provides an exciting opportunity for you to learn the Korean language (or Taekwondo) while enjoying the culture by exploring Korea with our cultural excursion program in the afternoon session.

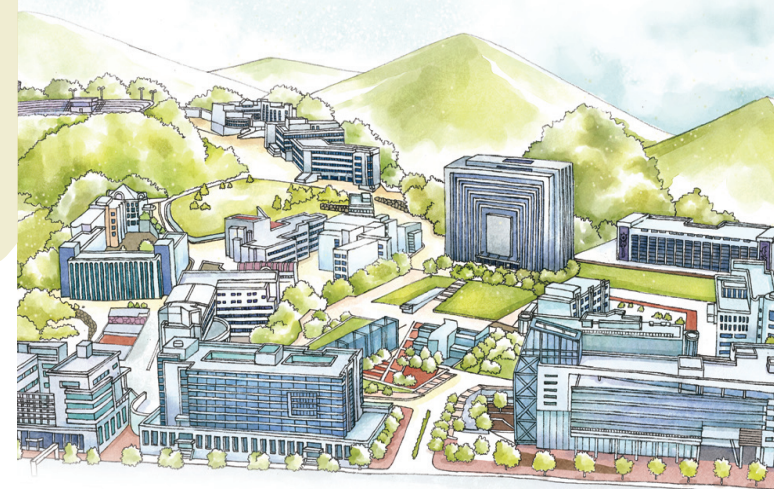


Contact information

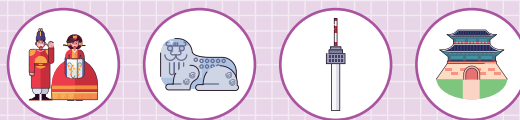
Tel : +82-31-750-5673
Email : gstep.gu@gmail.com
Website : <http://oia.gachon.ac.kr>
Office of International Affairs
(Room 613 Global Center, Gachon University)

G-STEP

Gachon Short-Term Education Program



Program Schedule



▪ Korean Language

This course will provide the students with the knowledge of Korean language with the themes such as Korean phonics and alphabet, self-introduction, greeting, asking questions, and ordering & purchasing an item. In the second weeks, you will learn asking time, simple conversations with people on street, shopping and how to get to tourist destinations.

▪ Health Assessment Practicum & Medical Terminology

This course will provide the students with the knowledge and skills of health assessment across the life span. It will include health history and physical examination of an individual's body systems in a variety of settings across the life span. Medical Terminology deals with working knowledge and word building skills of the language of health professions. It also covers medical and nursing terms relating to human body structure and function, pathology, diagnosis, and clinical intervention.

Session	1 st day	2 nd day	3 rd day	4 th day	5 th day	6 th day
Morning Session (9:00~12:00)	Arrival Airport Pick-up Dorm-Check in	Korean	Korean	Korean	Korean	Weekend
Afternoon Session (13:00~)		Korean	Local market/ Namsan tower	Kyungbokgung palace/ Hanbok experience	Nanta performance	
Session	7 th day	8 th day	9 th day	10 th day	11 th day	12 th day
Morning Session (9:00~12:00)	Weekend	Korean	Korean folk village	Korean	Korean	Dorm Check-out Departure
Afternoon Session (13:00~)		Korean	Sledding slope	K-pop experience	Closing ceremony	

Session	1 st day	2 nd day	3 rd day	4 th day	5 th day	6 th day
Morning Session (9:00~12:00)	Arrival Airport Pick-up Dorm-Check in	Health assessment practicum				Weekend
Afternoon Session (13:00~)		GIL medical center tour	Medical terminology			
Session	7 th day	8 th day	9 th day	10 th day	11 th day	12 th day
Morning Session (9:00~12:00)	Weekend	Health assessment practicum				Dorm Check-out Departure
Afternoon Session (13:00~)		Medical terminology		Health assessment practicum		

* Above schedule is subject to change without prior notice.

* Cultural excursions WILL NOT be held on the medical campus. The participants are to enjoy their free time after class

Tuition& Fees

- Program fees are Non-refundable.
- Note that there will be NO Cultural excursion program on the medical campus.
- Students will be placed in a quad room (No bedding materials included)
- Please note that all bank charges for international wire transfer are to be borne by the sender.
- Free airport sending bus on the last day

Class	Tuition Fee	What's Included
	KRW	
Korean Language	900,000	Application Fee Korean Language class Dormitory Airport pick-up Text book Lunch meals in week days Cultural Excursion
Nursing	450,000	Application Fee Nursing classes Dormitory Airport pick-up

* Above graph is tuition fee for sister university. If your school is not our sister university yet, please contact Gachon university staff in the brochures.

* For the discount inquiry, please contact us with OIA at your home university.

* Note there will be No discount for the medical campus

How to Apply

We accept applications through OIA at sister universities. Please contact the OIA at your university for the application process. If you have any questions about the details of application process and required documents, please contact gstep.gu@gmail.com.

Location	Class	Credit(Pass/Fail)	Language
Global campus	Korean Language	2	Korean
	Cultural excursion	2	Korean
Medical campus	Health assessment practicum/ Medical terminology	2	English

* Above list is subject to change due to the condition of the university.

* Grading will be Pass/Fail.

* We issue an official transcript upon the completion of the program. Please check with your home university for the credit transfer.

* All participants are to take ONE of the classes above except cultural excursion